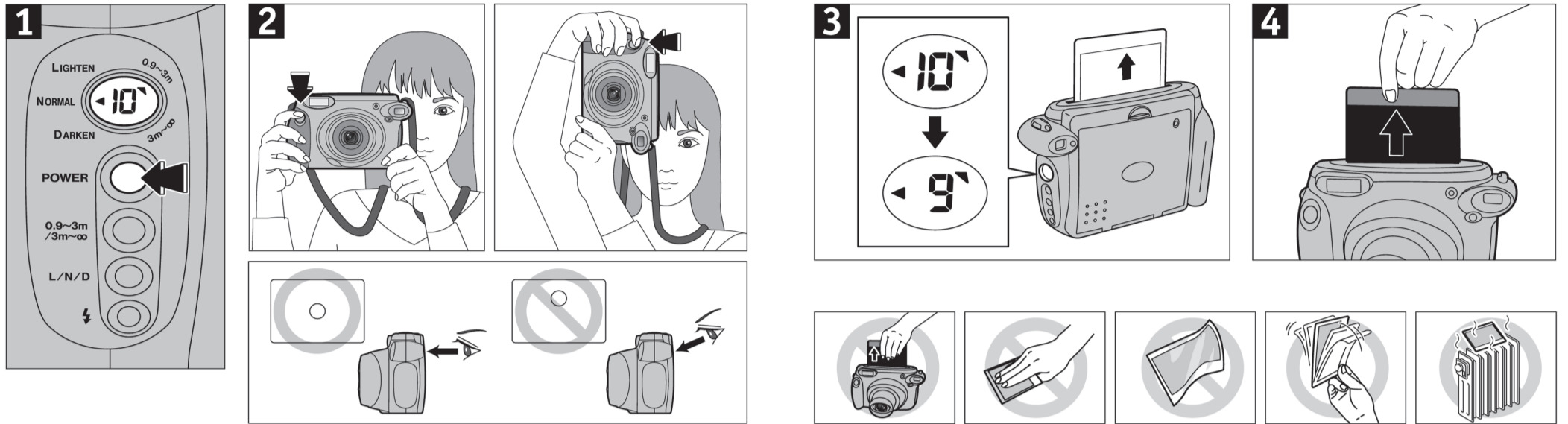


# TAKING PICTURES



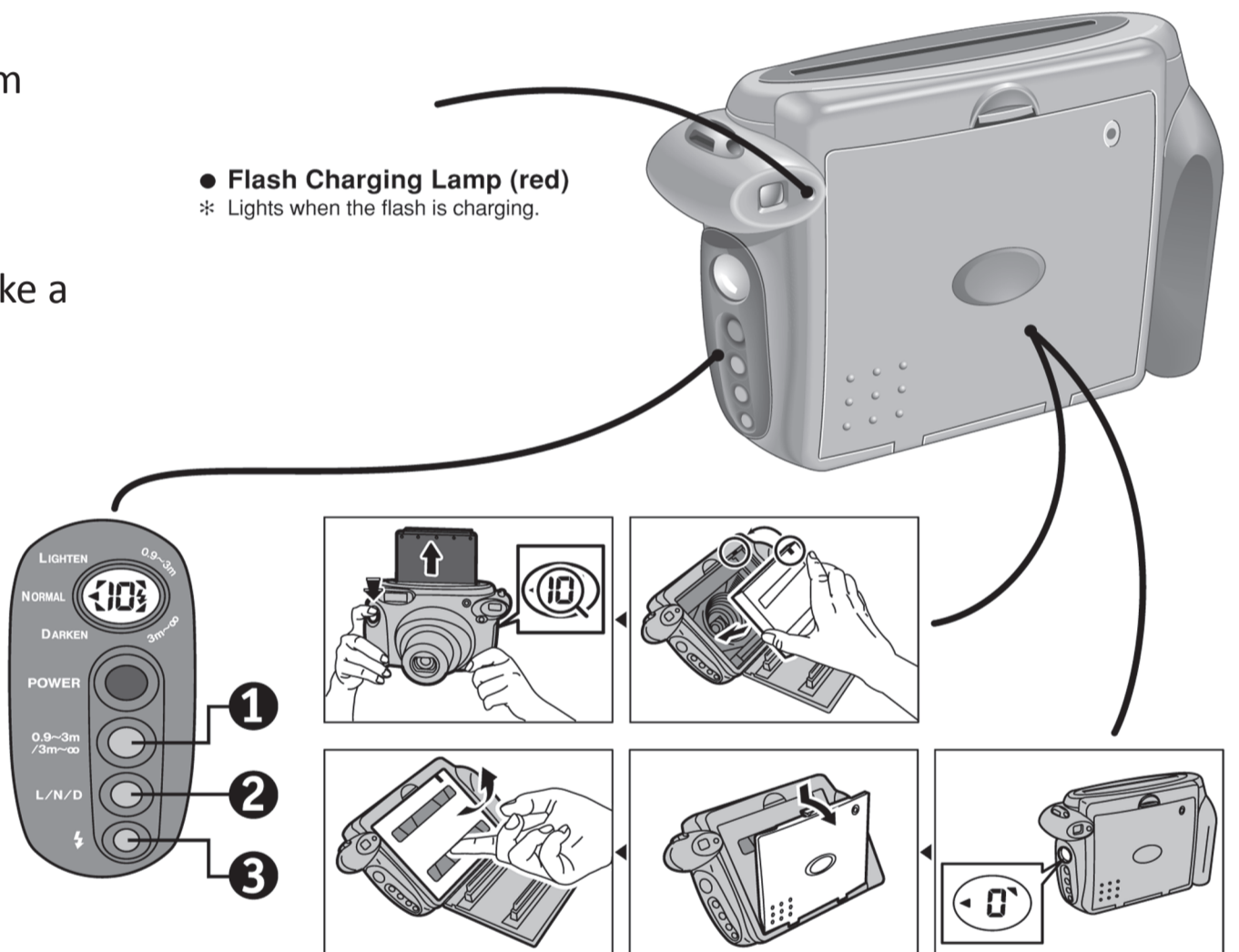
## Instructions:

- 1) Turn on power (red button)
- 2) Check distance is set to 0.9 - 3m
- 3) Turn on flash as indicated
- 4) Press shutter on top right to take a picture.

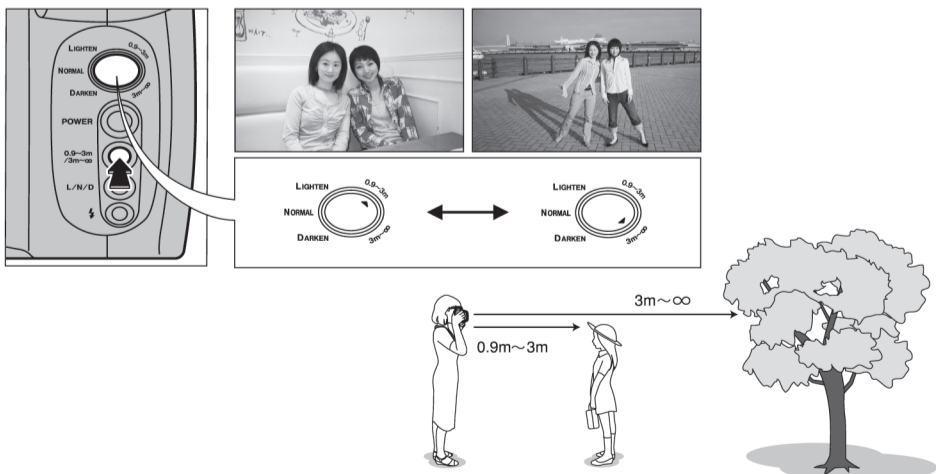


## Changing Film:

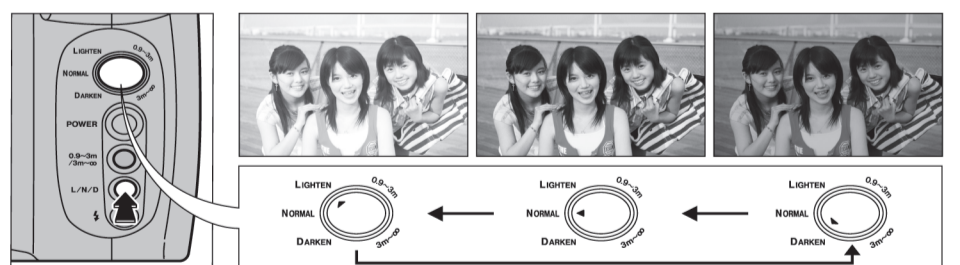
- 1) Open back of camera and remove cartridge. Insert new cartridge the same way with yellow bars matching in top right corner and slots facing out.
- 2) Press shutter to remove print cover (black plastic).



### 1) Shooting Range



### 2) Lighten-Darken Control



### 3) Fill-in Flash

